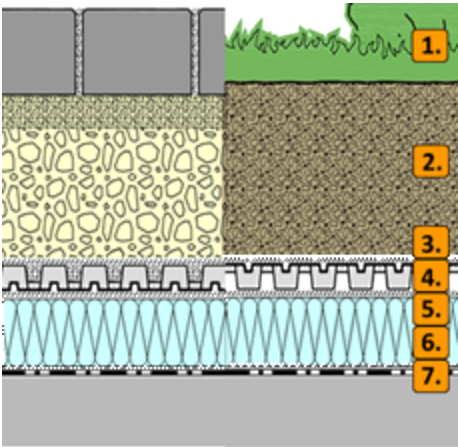


RECREATIONAL PARK WITH STABILODRAIN SD30

The Stabilodrain is a stable drainage layer that is both pressure resistant and has a high drainage capacity. This system is designed for parking decks on inverted roofs and can also be used for intensive roof gardens. Stabilodrain is ideally suited as a substructure for larger intensive green areas such as recreational parks or plazas. But it can be applied just as well under driveways and parking areas. The Stabilodrain creates a durable protection layer for the waterproofing and roof construction underneath.



- 1a. Hard surfacing
- 1b. Plant material - Nursery Stock
- 2a. Gravel Base
- 2b. Growing medium ZinCo Blend – I



- 3. ZinCo system filter TG



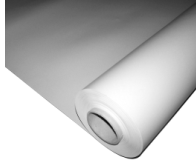
- 4. ZinCo St abilodrain SD30



- 5. ZinCo separation sheet TGV 21



- 6. Rigid insulation
- 7. ZinCo root barrier WSB 80-PO



Technical Data:

System buildup height:	> 310 mm (12")
Slope:	2 – 10 degree
Saturated weight:	> 360 kg/m ² (102 lbs/sqft)
Water retention capacity:	> 67 l/ m ² (saturated)



Recreational park