

Product Data Sheet

Balcony and Terrace Channel BTR

Order No. 4771



Slotted drainage channel made of stainless steel with visually appealing grill for installation in front of thresholds or along facades.

Technical Data

Balcony and Terrace Channel BTR

Made of stainless steel, visually appealing grill; channel body with lateral slots; easy connection due to plug-in joints. Joints need to be removed if not in use. 6 adjusting screws allow for vertical adjustment of 15 mm.

Channel width:	ca. 100 mm
Channel height:	ca. 40–55 mm
Channel length:	ca. 1 m

Accessories:

Pre-fabricated 90°-corners,
incl. vertical adjustment
Leg length:

Order No. 4775

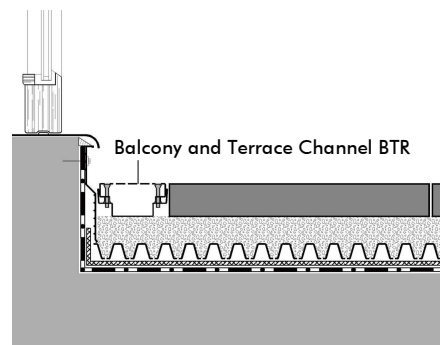
ca. 220 mm x 220 mm

Features

- easy vertical adjustment with adjustment screws in the grill
- direct installation in bulk material possible
- collects and drains facade water effectively
- used for low connection constructions in threshold and terrace applications
- visually appealing design
- quick and easy installation due to plug-in joints
- lockable cover
- also usable in combination with concrete slabs on Elefeet® pedestals

Application Example

"Terrace Surface on Floradrain® FD 25"



Concrete slabs in gravel bed
Floradrain® FD 25
Protection Mat ISM 50
Roof construction with waterproofing

Specification Suggestion

Balcony and terrace channel made of stainless steel; vertical adjustment range from ca. 40 mm up to 55 mm, slotted and lockable cover, channel body with lateral slots, delivery and installation according to manufacturer's instructions, including butt joint connector, width

ca. 100 mm, height ca. 40–55 mm, length ca. 1 m.

Make: ZinCo Balcony and Terrace Channel BTR
Enquiries: ZinCo Canada Inc.
Phone: 1-905-690-1661