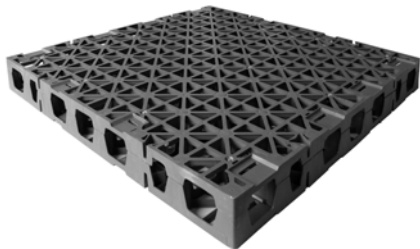


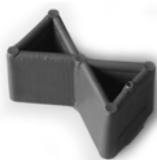
# Product Data Sheet

## Retention Spacer RSX 65

Order No. 3402



Powerful Spacer Element made of polypropylene for its use on roof surfaces without any inclination, especially for retention build-ups meant for heavy load (e.g. in walkways and driveways).



The Spacer Elements can be connected with each other using special interlocks.

### Technical Data

#### Retention Spacer RSX 65

Heavy duty Spacer Element made of polypropylene.

Material: 100 % Polypropylene  
 Colour: green  
 Height: ca. 65 mm  
 Weight: ca. 2.4 kg/m<sup>2</sup>

Cavity volume: > 95 %  
 Maximum retention volume: ca. 55 l/m<sup>2</sup>

Compressive strength according to EN ISO 25619-2: up to 50 t/m<sup>2</sup>

Dimensions: ca. 0.60 m x 0.60 m

Other heights available on request.

#### Accessories:

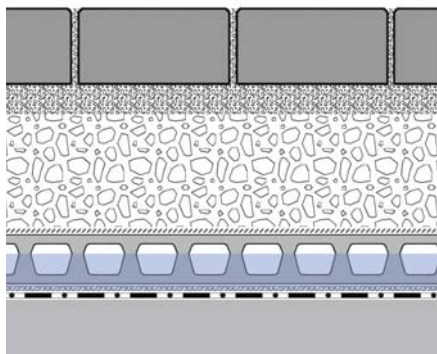
Plastic Connector Order No. 9622  
 (requirement: 4 pieces per element  $\approx$  ca. 11 pcs./m<sup>2</sup>)

### Features

- provides for additional water retention on roofs without inclination
- developed specially for its use under high loads (e.g. walkways and driveways)
- high retention volume
- spacious channel system for aeration and drainage
- biologically neutral

### Application Example

#### "Driveway with Retention Spacer RSX 65"



Paving slabs in a bedding of stone chippings

Gravel base layer

Filter Sheet PV

Retention Spacer RSX 65

Filter Sheet PV

Roof construction with waterproofing / waterproof concrete

### Specification Suggestion

Spacer Elements made of thermoformed polypropylene, height ca. 65 mm, with an integrated multidirectional channel system, cavity volume > 95 %, max. retention volume ca. 55 l/m<sup>2</sup>, compressive strength up to 50 t/m<sup>2</sup>,

delivery and installation according to manufacturer's instructions.

Make: ZinCo Retention Spacer RSX 65  
 Enquiries: ZinCo GmbH,  
 Phone: +49 7022 6003-0

