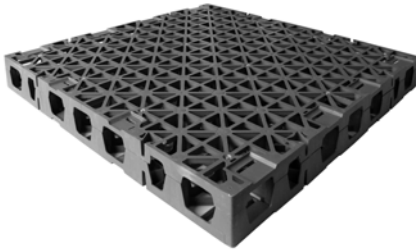


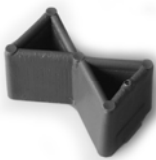
Product Data Sheet

Retention Spacer RSX 150

Order No. 3402



Powerful Spacer Element made of polypropylene for its use on roof surfaces without any inclination, especially for retention build-ups meant for heavy load (e.g. in walkways and driveways).



The Spacer Elements can be connected with each other using special interlocks.

Technical Data

Retention Spacer RSX 150

Heavy duty Spacer Element made of polypropylene.

Material: 100 % Polypropylene
Colour: green
Height: ca. 150 mm
Weight: ca. 2.8 kg/m²

Cavity volume: > 95 %ca.
Maximum retention volume: 145 l/m²

Compressive strength according to EN ISO 25619-2: up to 50 t/m²

Dimensions: ca. 0.60 m x 0.60 m

Other heights available on request.

Accessories:

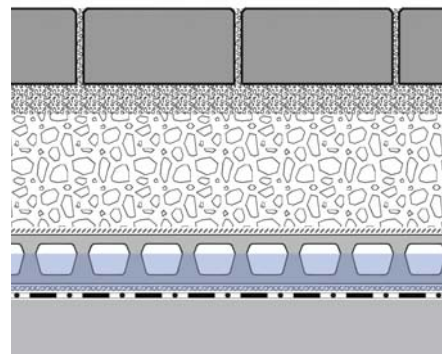
Plastic Connector Order No. 9622
 (requirement: 4 pieces per element \approx ca. 11 pcs./m²)

Features

- provides for additional water retention on roofs without inclination
- developed specially for its use under high loads (e.g. walkways and driveways)
- high retention volume
- spacious channel system for aeration and drainage
- biologically neutral

Application Example

"Driveway with Retention Spacer RSX 150"



Paving slabs in a bedding of stone chippings

Gravel base layer

Filter Sheet TG

Retention Spacer RSX 150

Filter Sheet PV

Roof construction with waterproofing / waterproof concrete

Specification Suggestion

Spacer Elements made of thermoformed polypropylene, height ca. 150 mm, with an integrated multidirectional channel system, cavity volume > 95 %, max. retention volume ca. 145 l/m², compressive strength up to 50 t/m²,

delivery and installation according to manufacturer's instructions.

Make: ZinCo Retention Spacer RSX 150
 Enquiries: ZinCo Canada Inc.
 Phone: 905-690-1661