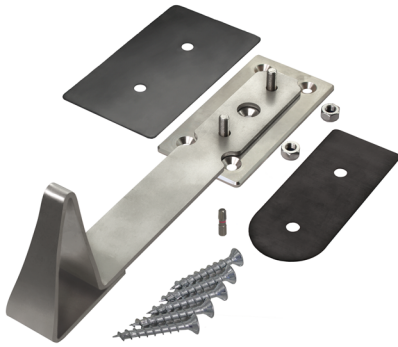


# Product Data Sheet

## Shear-Fix LF 300

Order No. 9568



Stable shear retainer, made of solid stainless steel, to be installed on sealed pitched roofs as loose flange / fixed flange construction. Replaces wooden shear barriers in connection with ZinCo eaves profiles.

### Technical Data

#### Shear-Fix LF 300

Shear retainer, made of solid stainless steel, 5 x 50 mm for use on sealed pitched roofs to prevent the green roof build-up from slipping. To be installed in connection with Eaves Profile TRP 80 or TRP 140 at the eaves or as shear barrier on the roof area.

<b>Material:</b>	stainless steel 5 x 50 mm with barrel finished surface
<b>Dimensions base plate (=fixed flange):</b>	Length ca. 170 mm Width ca. 90 mm
<b>Dimensions:</b>	length ca. 400 mm retaining bracket height ca. 100 mm
<b>Weight:</b>	ca. 1.8 kg incl. screws
<b>Load bearing capacity:</b>	300 kg/shear retainer

#### Scope of delivery:

1 base plate, 1 retaining bracket, 2 nuts M10 (stainless steel each)  
5 wood screws (galvanized steel), 1 bit  
2 intermediate layers made of EPDM (big and small one)

Officially approved fastening devices for the fixation on concrete structures (minimum concrete strength class C20/25) are available upon request.

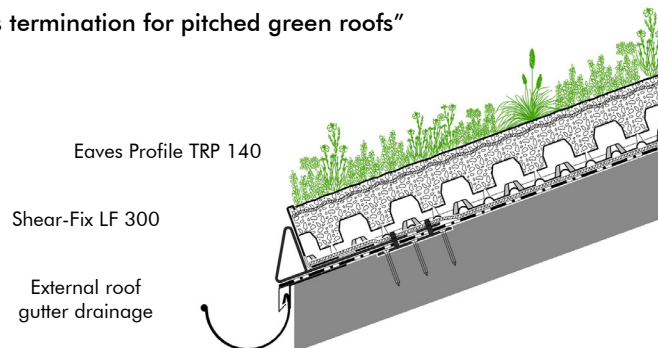
Special solutions for insulated roofs (warm roof, inverted roof) are also available on request.

### Features

- base plate and retaining bracket made of solid stainless steel
- rule-consistent waterproofing as loose flange / fixed flange construction according to German DIN 18195-9
- replaces shear barriers made of wooden materials
- easy waterproofing of the shear retainers
- no slack flow over the shear barriers
- unhindered drainage all over the roof area
- invisible within the vegetation

### Application Example

"Eaves termination for pitched green roofs"



### Specification Suggestion

Delivery and installation of shear retainer made of solid stainless steel, 5 x 50 mm, length ca. 400 mm, retaining bracket height ca. 100 mm, incl. base plate, accessories and screws for fastening on timber sub-construction. To be used in connection with the Eaves profile TRP 80 or TRP 140 at the eaves or as shear barrier on the roof area, the shear retainer protects the green roof build-up

from slipping. The base plate is fixed with 5 corrosion-protected screws on the supporting structure. It is sealed according to German DIN 18195-9 with the sealing material used for the roof as a loose flange / fixed flange construction.

Make: ZinCo Shear-Fix LF 300  
Enquiries: ZinCo GmbH,  
Phone: +49 7022 6003-0