

# Product Data Sheet

## Pedestals Elefeet®-Accessories

### Elefeet® Pedestals

Made of stable polypropylene, vertically adjustable, with integrated ca. 3 mm joint spacer.

Type	Vertically adjustable range	Order-No.
H 25	25 – 40 mm	9670
H 35	35 – 70 mm	9671
H 65	65 – 155 mm	9672
H 145	145 – 225 mm	9673



### Extension Piece A 80

to increase the Elefeet® (multiple extension pieces possible), height ca. 80 mm  
Art.-Nr. 9654



### Levelling Pad

ca. 1 mm, it can also be used on the Elefeet® top part as slip protection  
Order No. 9635



### Buffer Pad

ca. 3 mm, it can be used on the Elefeet® top part as support pad for thin ceramic terrace tiles  
Order No. 9636



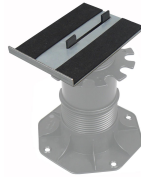
### Locking Disc

made of aluminium, for the fixation of the Elefeet® top part in a horizontal position  
Order No. 9675



### Edge Retainer

Made of galvanized steel, width ca. 125 mm, length ca. 175 mm, non-slip surface, Order No. 9659



### Cantilever Arm Support

Made of galvanized steel, width ca. 125 mm, length ca. 800 mm, non-slip surface, Order No. 9658



### Spacer with base plate

Leg thickness 3 mm / 5 mm, Height ca. 11 mm, four legs, for large, thin slabs  
Order No. 9624 / 9623



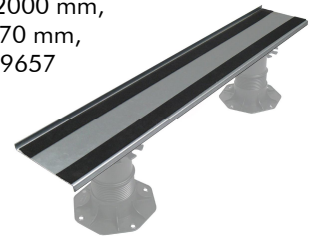
### Adjusting Tool

Order No. 9656



### Mitre Cut Support

Galvanized steel, non-slip surface, length ca. 2000 mm, width ca. 170 mm, Order No. 9657



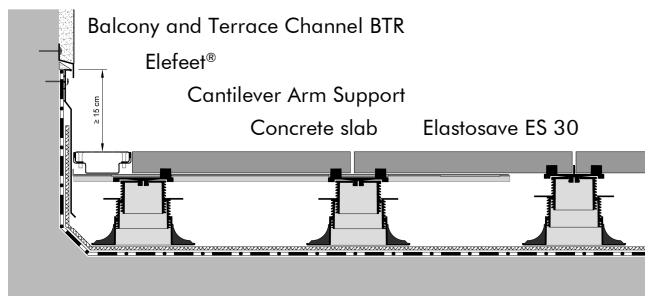
### Terrace Grills

Galvanized steel, mesh width ca. 44 x 11 mm  
ca. 400 x 400 mm H 40 Order No. 4210  
ca. 400 x 400 mm H 50 Order No. 4213  
ca. 500 x 500 mm H 50 Order No. 4215



### Balcony and Terrace Channel BTR

Made of stainless steel, for use in front of facades and up stands, vertically adjustable from 40 - 55 mm, length ca. 1000 mm, width ca. 107 mm  
Order No. 4771



Detail: "Wall connection with drainage channel"

### Installation Instructions

Walkways on Elefeet® pedestals generally need to have a stable edging to all sides. If at one or more sides there is no wall or roof up stand a stable retainer made of concrete kerbs or L-shaped precast-elements is necessary. "Edge Retainer", "Locking Disc" and "Cantilever Arm Support" are useful tools to work out details, however they are no substitution for a stable edging! Along the edging pavers might need to be cut, to place them or the "Balcony and Terrace Channel BTR" along a façade the "Cantilever Arm Support" can be used (refer to graphic), which sits on two Elefeet®-pedestals and is hold in place by the weight of the paving. If the edging to the paving is not orthogonal the "Mitre Cut Support" can be used. This profile is laid parallel to the edging and holds even very small pieces of paving. A continuous approx. 15 mm high up stand and the rubber coating achieve a stable position.