

Walkway with adjustable pedestals

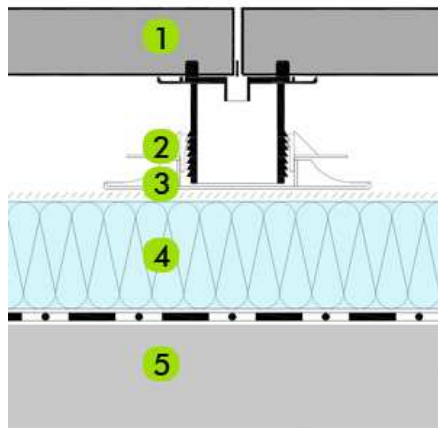
Light weight and height adjustable...

Some roofs do not have the load bearing capacity to carry the load of the base layer, bedding material and surface layer. In this instance the ZinCo Elefeet® are able to bear the load, and as a result of its minimal weight, only the weight of the surface has to be taken into consideration. Surface water can be drained quickly and easily through the open joints and into the lower cavity; in addition, this open subspace provides good aeration. If higher Elefeet® are used, water pipes, cables, or water hoses can be accommodated and used, for example, to irrigate adjacent intensive green areas.

ELEFEET

The ZinCo Elefeet is an adjustable pedestals that can be used to install roof pavers and wood decking with heights of 25 mm to 400 mm. The Elefeet pedestal can accommodate sloped of up to 4.5 degrees (8%) and allows for quick drainage and aeration of the roofing assembly.

Assembly:



1. Roof Paver / Wood Decking
2. ZinCo Elefeet Pedestals
3. ZinCo Diffusion membrane TGV21
4. XPS Rigid Insulation
5. Roof Construction with Waterproofing Membrane



Features:

- Light weight and easy to install
- Used for roof pavers and wooden decks
- Easy installation
- In height adjustable

Slope: 2-5 degrees
Load Capacity: 500 kg per pedestal
Height: 25-400 mm (1"-16")



LIGHT WEIGHT

INNOVATING WITH NATURE

Walkway with adjustable pedestals

Light weight and height adjustable...



ZinCo Elefeet adjustable pedestal made of polypropylene. Designed for pavers or wood decking on flat roofs with a deeper build-up height. Including spacers, load distribution plate (diam.: approx. 20 cm), extension pieces and 8% slope ring. Max. load bearing capacity: 500 kg/pedestal.

Product	Art. Nr.	Size of Delivery
Elefeet H25 - 25 mm - 40 mm	9670	Piece - Box of 42 pieces
Elefeet H35 - 35 mm - 70 mm	9671	Piece - Box of 36 pieces
Elefeet H65 - 65 mm - 155 mm	9672	Piece - Box of 32 pieces
Elefeet H140 - 140 mm - 225 mm	9673	Piece - Box of 24 pieces



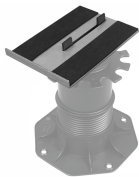
ZinCo Buffer Pad 1 or 3 mm, it can be used as support pad for thin ceramic terrace tiles and anti-slip protection
ZinCo Locking Disc made of aluminium, for the fixation of the Elefeet® top part in a horizontal position
ZinCo Extension Piece A 80 to increase the Elefeet® (multiple extension pieces possible), height 80 mm

Product	Art. Nr.	Size of Delivery
Buffer Pad 1 mm	9635	Box of 100 pieces
Buffer Pad 3 mm	9336	Box of 100 pieces
Locking Disc	9675	Box of 50 pieces
Extension Piece A 80 - 80 mm	9654	Piece - Box of 60 pieces



ZinCo Cantilever Arm Support made of galvanized steel, width:125 mm, length: 800 mm with non-slip surface. Designed to support small paver pieces and face drains.

Product	Art. Nr.	Size of Delivery
Cantilever Arm Support	9658	Piece



ZinCo Edge Retainer made of galvanized steel, width:125 mm, length: 175 mm with non-slip surface. Designed to support small pieces of paver at wall and parapet connections.

Product	Art. Nr.	Size of Delivery
Edge Retainer	9659	Piece



ZinCo Miter Cut Support made of galvanized steel, width:170 mm, length: 2000 mm with non-slip surface. Designed to support small pieces of non-orthogonal paver. The profile is laid parallel to the miter cut.

Product	Art. Nr.	Size of Delivery
Miter Cut Support	9657	Piece



ZinCo Adjusting Tool - Wrench to adjust the Elefeet Pedestal in height once the pavers are installed.

Product	Art. Nr.	Size of Delivery
Adjusting Tool	9656	Piece



ZinCo Terrace grill or facade grill TR-F/FR-F made of galvanized steel. Opening size: 44 mm x 11 mm. Designed in combination with the Elefeet pedestal for areas with a higher water accumulation and at roof drain locations. Sizes: see below.

Product	Art. Nr.	Size of Delivery
TR-F 40x40x4 cm	4210	Piece
TR-F 40x40x5 cm	4213	Piece
TR-F 50x50x5 cm	4215	Piece