

# INNOVATING WITH NATURE

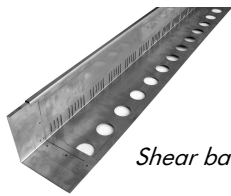
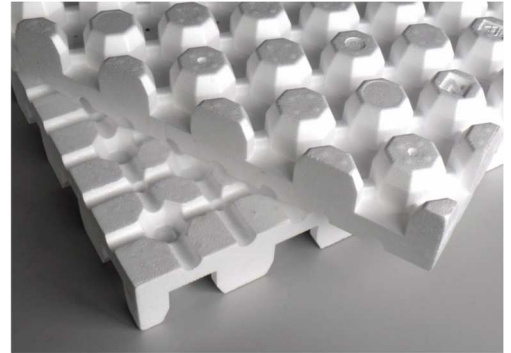
## Sloped Green Roof

Up to 25°

Extensive landscaping is most often used on flat roofs but it can also be applied on sloping roofs. However, for gradients of more than 10° the build-up of layers must be modified to suit the different conditions. The force-relieving Floraset® FS 75 elements, a mat with higher water retention levels and a Jute anti-erosion net are all used in this case.

### FLORASET FS75

The ZinCo Floraset FS75 element is designed and engineered to counter the shear forces of the green roof. In combination with the ZinCo shear barrier TRP80 or TRP140 and support brackets ZinCo TSH80 or TSH100, this unique profiled element provides secure retention of the growing medium on slopes up to 25 degrees.



Shear barrier TRP140



Support Bracket TSH80

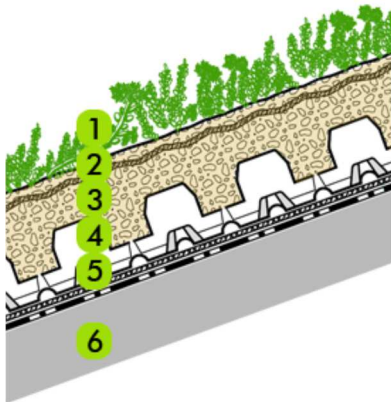
### Planting Options:



Plug Plants



Pre-grown vegetation mat



1. Plant Material
2. ZinCo anti-erosion net JEG
3. Growing Medium ZinCoblend-E  
Depth: 80 - 100 mm
4. ZinCo Floraset ® FS75
5. ZinCo Moisture Mat BSM64
6. Roof Construction with root protected Waterproofing Membrane

### Features:

- Compact and secure soil retention
- Minimum maintenance
- Simple irrigation recommended
- Planting: low growing sedum
- Fast and simple installation

Slope: 10 - 25 degrees  
Saturated weight: 120 kg/m<sup>2</sup> (25 psf)  
Height: 130 mm (5.5")  
Retention capacity: 43 L/m<sup>2</sup>



#### ZinCo Canada Inc.

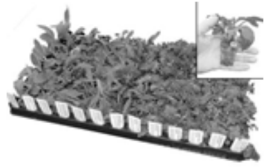
P.O. Box 29 · Carlisle · L0R 1H0 · Ontario  
Phone 1-905-690-1661 · Fax 1-905-689-0432  
greenroof@zinco.ca · www.zinco.ca



# INNOVATING WITH NATURE

## Sloped Green Roof

Up to 25°



Special plants for extensive green roofs. Available species: sedums, grasses and drought resistant perennials. For information about plant lists and availability please contact us at: 905-690-1661 or e-mail: [greenroof@zinco.ca](mailto:greenroof@zinco.ca)

Product	Art. Nr.	Size of Delivery
Plug plants tray of 50	8200	Plug
Plug plants tray of 72	8201	Plug
Pre-grown vegetation mat	8030	Approx. 1,0 x 2,00 m mats



ZinCo anti-erosion mesh JEG made of 100% jute. Special designed for sloped application and wind up-lift. Biodegradable. Weight: approx. 500 g/m<sup>2</sup>. Mesh size: 3 cm x 4 cm.

Product	Art. Nr.	Size of Delivery
Jute Mesh JEG	2856	Approx. 1.22 m x 70.00 m roll



Growing medium for extensive Green Roofs ZinCoblend –E are produced using recycled materials and minerals, enriched with high quality compost elements, resistant to flying sparks, frost-resistant, stable structure. Special engineered by ZinCo Canada and meets the FLL-standards for Planning, Execution and Upkeep of Green Roof sites.

Product	Art. Nr.	Size of Delivery
ZinCoblend-E - Bulk	6100	Per cubic meter
ZinCoblend-E - Big Bag	6110	Per cubic meter



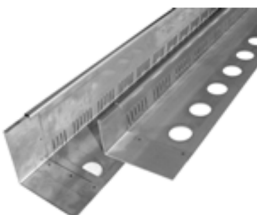
ZinCo drainage and anti erosion element Floratec FS75 for sloped extensive Green Roofs. Made of 100% recycled polystyrene; with deep profiles to provide a secure hold for the growing medium against slippage (erosion) as well as a multi-directional drainage channel system on the underside and openings for ventilation and evaporation, height 75 mm. Fill capacity: 25 l/m<sup>2</sup>. Weight: approx. 1,9 kg/m<sup>2</sup>.

Product	Art. Nr.	Size of Delivery
Floraset ® FS75	3075	Approx. 1.00 x 1.00 m element



ZinCo moisture and protection mat BSM64 with a fleece carrier. Made of high quality recycled non-rotting polypropylene fibers, penetration resistant, for water- and nutrient retention as well as protection layer. Thickness: 7 mm. Weight approx. 650 g/m<sup>2</sup>. Water retention capacity: 7 l/m<sup>2</sup>. Bitumen resistant - Biologically and chemically neutral.

Product	Art. Nr.	Size of Delivery
BSM64	2064	Approx. 2.00 m x 25.00 m roll



ZinCo heavy duty eaves profile TRP 80 (80 mm) or TRP 140 (140 mm) made of stainless steel L-bracket. Designed as a profile for sloped roofing edges and as edging between pavement and green areas. Including vertical slots for drainage, openings for adhesion to the waterproofing membrane (with adhesive tape), and attached butt joints. Length: approx. 3 m.

Product	Art. Nr.	Size of Delivery
TRP 80 Stainless (80 mm)	7780	3 m length
TRP 140 Stainless (140 mm)	7782	3 m length
TSH 80 support bracket	9560	piece
TSH 100 support bracket	9565	piece
L300 shear barrier	9568	piece

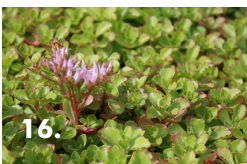
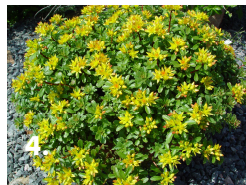
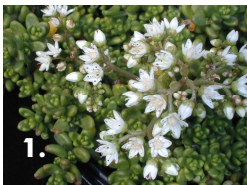


## Sloped Green Roof

Up to 25°

### Plant Suggestions:

Name:	Height:	Colour:	Zone:	Flower:
1. Sedum album	150 mm	green	4	white
2. Sedum album "Coral Carpet"	50 mm	green/red	4	white
3. Sedum album "Murale"	50 mm	green	4	white
4. Sedum floriferum "Weihenstephaner Gold"	100 mm	green	3	yellow
5. Sedum hybridum "Immergrunchen"	150 mm	red/green	4	yellow
6. Sedum hybridum "Czar's Gold"	150 mm	green	3	yellow
7. Sedum kamschaticum	100 mm	green	4	yellow
8. Sedum reflexum	150 mm	green/gray	3	yellow
9. Sedum rupestre "Angelina"	120 mm	yellow	4	yellow
10. Sedum rupestre "Blue Spruce"	150 mm	blue/gray	3	yellow
11. Sedum rupestre "Green Spruce"	150 mm	green	3	yellow
12. Sedum sexangular	100 mm	green	4	yellow
13. Sedum spurium album	150 mm	green	4	white
14. Sedum spurium "Fuldaglut"	150 mm	green/red	3	red
15. Sedum spurium "John Creech"	100 mm	green	3	pink
16. Sedum spurium "Roseum"	150 mm	green	4	pink
17. Sedum spurium "Voodoo"	100 mm	red	4	red



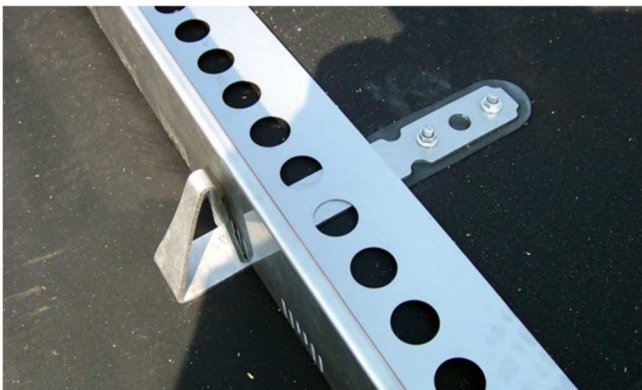
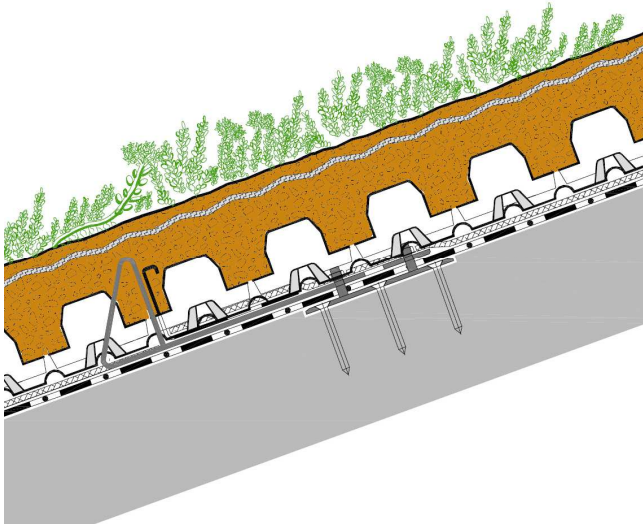
# INNOVATING WITH NATURE

## Sloped Green Roof

Up to 25°

### SHEAR BARRIERS

On sloped roofs the green roof assembly is creating shear forces which means that the entire assembly wants to slide to the lowest point of the roof. To counter these shear forces, barriers are required at the eaves of the roof and, based on the sloped and the length of the roof, at some locations in the middle of the roof. These barrier can be created using the steel L-profile ZinCo TRP 80 or TRP140 in combination with support brackets ZinCo Sheafix LF300.



*Shear barrier using ZinCo L-profile TRP80 or TRP140 in combination with ZinCo Shear bracket LF300*